

15K Pressure Regulating Valve (By-Pass Valve) A Pressure Regulating Valve (PRV) is used on both diesel and electric pumping units to divert a portion of the flow to a low pressure outlet. It is really a hand adjusted needle valve, and it can be used to control pressure when the application requires a flow at the low end of the pumping unit operating range. For electric units a PRV is required equipment, because the speed of the drive is not adjustable.

The design provides:

- Simple field rebuild using a cartridge unit. Down time is two minutes or less.
- This includes the locking of the adjuster handle, after the pressure is set.
- Easy hand adjustment without the need for wrenches.
- All components machined from stainless steel.
- Direct mounting to fluid end discharge manifold.

Part #	Description
65-110-015	Pressure Regulating Valve Complete

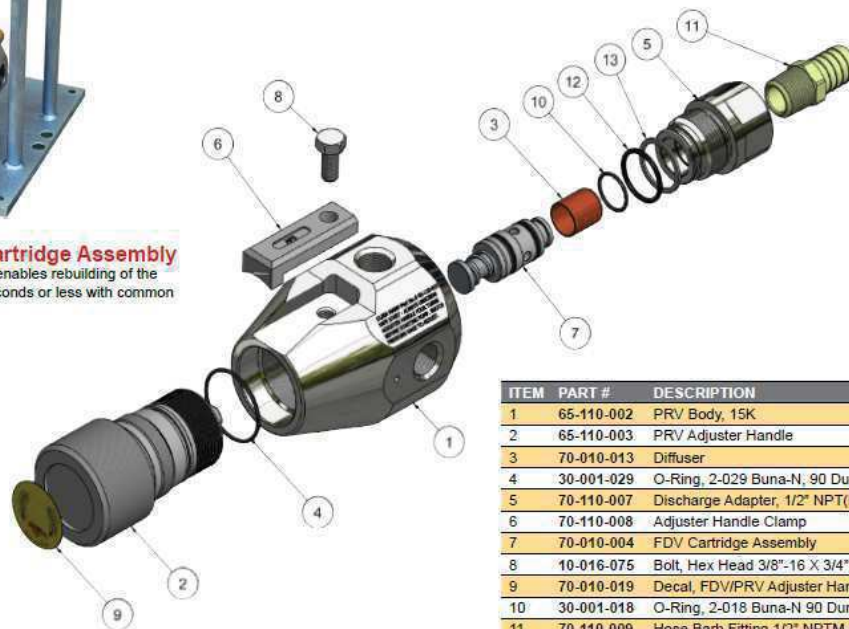
Part #	Description
65-010-004	Gauge Board Complete



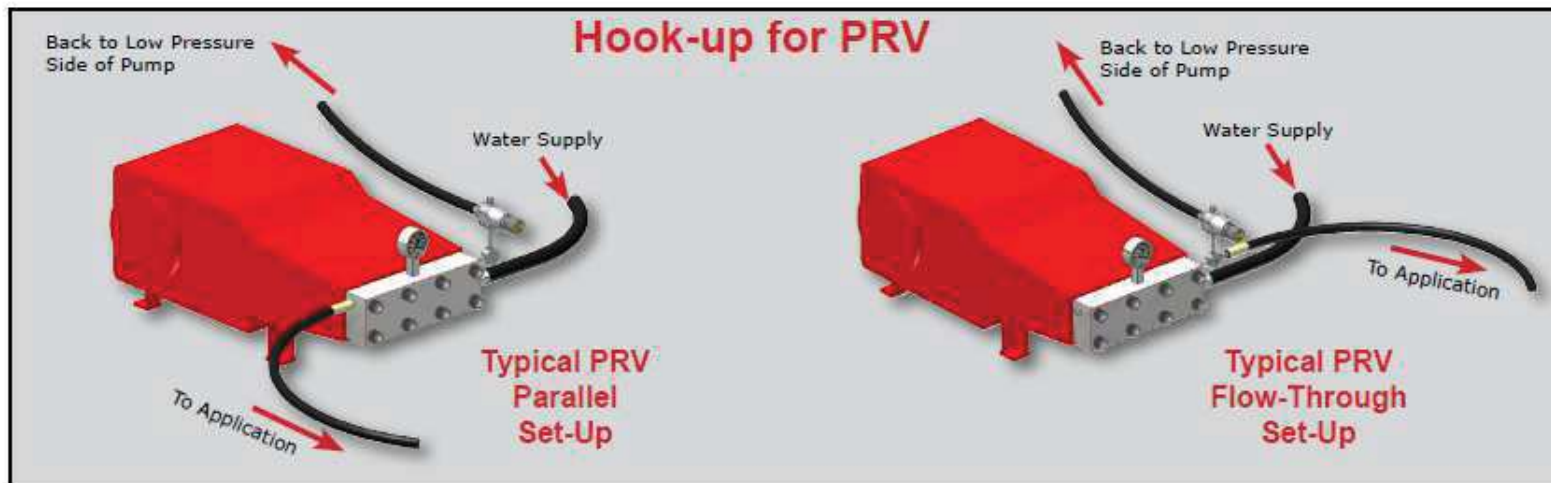
Easy-Change Cartridge Assembly

The cartridge assembly enables rebuilding of the FDV in the field in 30 seconds or less with common tools.

15K FDV Cartridge
#70-010-004



ITEM	PART #	DESCRIPTION
1	65-110-002	PRV Body, 15K
2	65-110-003	PRV Adjuster Handle
3	70-010-013	Diffuser
4	30-001-029	O-Ring, 2-029 Buna-N, 90 Dur.
5	70-110-007	Discharge Adapter, 1/2" NPT(F) 15K
6	70-110-008	Adjuster Handle Clamp
7	70-010-004	FDV Cartridge Assembly
8	10-016-075	Bolt, Hex Head 3/8"-16 X 3/4" SS
9	70-010-019	Decal, FDV/PRV Adjuster Handle
10	30-001-018	O-Ring, 2-018 Buna-N 90 Dur.
11	70-110-009	Hose Barb Fitting 1/2" NPTM x 3/4" Hose Size, Brass
12	30-001-120	O-Ring, 2-120 Buna-N 90 Dur.
13	30-003-120	Parbak Backup Ring



有限会社ケイテック
URL : <http://k-tech-co-ltd.sakura.ne.jp>
E-MAIL : k-tech@m2.pbc.ne.jp
PHONE : 090-9846-7017