

有限会社ケイテック

URL : <http://k-tech-co-ltd.sakura.ne.jp>

E-MAIL : [k-tech@m2.pbc.ne.jp](mailto:k-tech@m2.pbc.ne.jp)

PHONE : 090-9846-7017

**15K Handheld Dump Style Control Guns with 3/8" NPT Barrel** APS offers the 15,000 psi (15K) series of hand operated control guns, using the industry standard cartridge\* style dump valve. These guns have been carefully designed to incorporate all the features that are demanded by experienced operators.

- The cartridge valve\* enables the gun to be rebuilt in the field in 30 seconds or less. This will minimize down time and increase productivity.
- The cartridge valve\* also keeps the trigger force to a minimum, which reduces operator stress.
- These guns are lighter in weight (13 - 15lbs. depending on barrel diameter) resulting in less operator fatigue.
- The adjustable comfort-contoured shoulder stocks and front hand grips contribute to ease of use for operators, tending to diminish fatigue.
- These guns are standard with 48" front barrels for operator safety.
- All working components are stainless steel for corrosion resistance and durability.

Part #	Description	Barrel
60-010-052	Complete Handheld Dump Style Control Gun	3/8"



**WARNING**  
 BE AWARE THE ONLY  
 MANUFACTURER OF THIS  
 EQUIPMENT MUST  
 EXCEEDS WEIGHT

**15K<sub>psi</sub>**  
**1,034<sub>bar</sub>**

THIS EQUIPMENT NOT TO EXCEED 15,000  
 PSI OR 1,034 BAR WORKING PRESSURE

Gun Block Safety Decal  
 Part # 60-010-004D

ITEM	QTY	PART #	DESCRIPTION
1	4	10-001-100	1/4"-20 SS SHCS
2	1	10-010-001	Plain 375 SS Washer
3	1	20-012-048	15K Gun Barrel 48" Long
4	1	60-010-001	Gun Handle
5	1	60-010-003	Shoulder Stock
6	1	60-010-004	Gun Block 15K
7	1	60-010-005	*Handi Change* Cartridge Nut - 15K
8	1	60-010-009	Shoulder Stock Tube
9	1	60-010-012	Inlet Tube 15K
10	1	60-010-017	3/8" Barrel/Shoulder Stock Cam Stud (Incl. Locknut)
11	1	60-010-020	15K Cartridge Assembly
12	2	60-010-021	Trigger Pivot Pin
13	1	60-010-024	Barrel Bushing 1/2" to 3/8"
14	1	60-010-025	3/8" x 1/4" Nozzle Holder
15	1	60-010-057	Dump Tube Assembly
16	1	60-010-061	Trigger & Cam Assy w/Safety Latch
17	1	60-010-029	Quick Adjust Front Handle
18	2	60-010-004D	15K psi Safety Decal - Gun Block

有限会社ケイテック

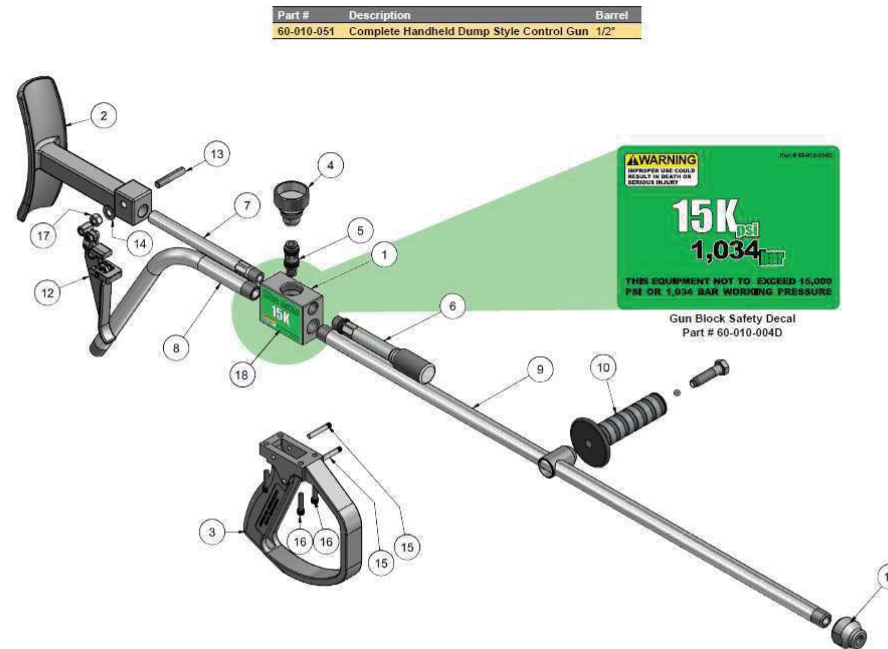
URL : <http://k-tech-co-ltd.sakura.ne.jp>

E-MAIL : [k-tech@m2.pbc.ne.jp](mailto:k-tech@m2.pbc.ne.jp)

PHONE : 090-9846-7017

**15K Handheld Dump Style Control Guns with 1/2" NPT Barrel** APS offers the 15,000 psi (15K) series of hand operated control guns, using the industry standard cartridge style dump valve. These guns have been carefully designed to incorporate all the features that are demanded by experienced operators.

\*\*\* SAFE OPERATION OF ANY HAND HELD CONTROL GUNS REQUIRES THE USE OF A SAFETY SHROUD. SEE PAGE 32 \*\*\*



ITEM	QTY	PART #	DESCRIPTION
1	1	60-010-004	Gun Block 15K
2	1	60-010-003	Shoulder Stock
3	1	60-010-001	Gun Handle
4	1	60-010-005	Hand Tightened Cartridge Nut - 15K
5	1	60-010-020	15K Cartridge Assembly
6	1	60-010-057	Dump Tube Assembly
7	1	60-010-009	Shoulder Stock Tube
8	1	60-010-012	Inlet Tube
9	1	20-013-048	Front Barrel 48" Long, 1/2" NPT at Each End
10	1	60-010-028	1/2" NPT FRONT HANDLE ASSEMBLY (Quick Adjust)
11	1	60-010-026	Nozzle Holder 1/2" NPT x 1/4" NPT
12	1	60-010-061	Trigger & Cam Assy. W/Safety Latch
13	1	60-010-017	Shoulder Stock Cam Stud Assy.(Includes Lock Nut)
14	1	10-010-001	3/8" Plain 3/8" Washer SS
15	2	60-010-021	Trigger Pivot Pin
16	4	10-001-100	SHCS 1/4" -20 SS
17	1	10-100-002	3/8"-16 Nylon Lock Nut
18	2	60-010-004D	15K psi Safety Decal - Gun Block